

## ARTIGO / ARTÍCULO / ARTICLE

# A new species of the genus *Orphinus* Motschulsky from Thailand (Coleoptera: Dermestidae: Megatominae).

Takanobu Kitano<sup>1</sup> & Jiří Háva<sup>2</sup>

<sup>1</sup> Entomological Laboratory, College of Agriculture, Ehime University, 3-5-7 Tarumi, Matsuyama City, 790-8566, Japan.

<sup>2</sup> Department of Forest Protection and Entomology, Faculty of Forestry and Entomology,  
Czech University of Life Sciences, Kamýcká 1176, CZ-165 21, Prague 6 - Suchbát, Czech Republic.  
e-mail: jh.dermestidae@volny.cz

---

**Abstract:** *Orphinus (Orphinus) horaki* sp. nov. from Thailand, is described, illustrated and compared with similar species.

**Key words:** Coleoptera, Dermestidae, *Orphinus*, taxonomy, new species, Thailand.

**Resumen:** Una nueva especie del género *Orphinus* Motschulsky de Tailandia (Coleoptera: Dermestidae: Megatominae). Se describe y se ilustra *Orphinus (Orphinus) horaki* sp. nov. de Tailandia. También se compara con especies similares.

**Palabras clave:** Coleoptera, Dermestidae, *Orphinus*, taxonomía, nueva especie, Tailandia.

---

**Recibido:** 29 de mayo de 2013

**Aceptado:** 31 de mayo de 2013

**Publicado on-line:** 6 de junio de 2013

urn:lsid:zoobank.org:pub:DFD8C4BF-43B6-40CD-8B2D-C6F250A55464

## Introduction

---

The species of the genus *Orphinus* Motschulsky, 1858 appear to be conspicuous due to their small body, colorful maculation and enlarged antennal club. They are widely distributed in the Ethiopian, Oriental and Australian Regions, being one species cosmopolitan (Mroczkowski 1968; Háva 2003, 2013a, b; Kitano & Háva 2012), mainly occurring in tropical areas.

The purpose of the present paper is to describe a new beautiful species from Thailand.

## Material and methods

---

Type specimens were equipped with red, printed label bearing the text as follows: "HOLOTYPE (or PARATYPE, respectively) *Orphinus (Orphinus) horaki* sp. n. T. Kitano & J. Háva det. 2013".

The material was determined, dissected and illustrated by using a stereomicroscope.

### Abbreviations:

EUMJ Ehime University Museum, Matsuyama, Japan.

JHAC Jiří Háva, Private Entomological Laboratory & Collection, Únětice u Prahy, Prague-west, Czech Republic.

## Results

### *Orphinus (Orphinus) horaki* sp. nov.

(Figs. 1, 3-6)

**Type material.** Holotype ♀: Thailand, Doi Pui, 19.iv.1985, M. Tao leg., (EUMJ). Paratypes: (4♀♀, 2♂♂): the same locality, (EUMJ); (11 spec.): NW Thailand, Chiang Mai distr., Doi Pui vill., 18°49' N 98°54' E, 2-6.v.1996, 1600 m, J. Horák leg., (JHAC); (1♂): NW Thailand, Chiang Mai prov., Ban San Pakia, 1700 m, 25.iv-7.v.1996, Sv. Bílý leg., (JHAC); (5 spec.): NW Thailand, Chiang Mai, Doi Suthep to Doi Pui, 19-23.iv.1991, J. Horák leg., (JHAC); (1♀): NE Thailand, Loei prov., Phu Kradung NP, 1300 m, 11-15.v.1999, M. Říha leg., (JHAC); (2♀♀): NW Thailand, Mae Hong Son, Ban Huai Po, 1600-2000 m, 8-18.v.1992, J. Horák leg., (JHAC). The head, prothorax, meso-metathorax and abdomen of the holotype were separately glued on small cards.

**Description.** Length 2.5 to 2.7 mm; width 1.6 to 1.8 mm.

**Female.** Body ovate, moderately convex above (Fig. 1). Colour black: pronotum and elytral spots reddish orange; one black vague spot occupying centre of pronotum; black elytron with one broad orange transverse fascia behind the shoulder and one posterior orange oval spot at suture; antennae, mouth parts, and tarsi pale brown. Pubescence: yellowish, erect setae on head and pronotum; bicolorous pubescence on elytra; black cuticle covered with blackish brown pubescence; orange fasciae with yellowish brown pubescence; metasternum and abdomen with recumbent brownish setae. Head somewhat sparsely punctate, with a distinct median ocellus; punctures becoming denser apically. Antennae 10-segmented; scape large, as large as pedicel; 3rd to 6th antennomeres small, as wide as long; 7th to 10th ones transverse, loosely articulated, progressively wider; terminal segment ovate, reaching half the width of hypomeron when reposed (Fig. 3). Pronotum finely and sparsely punctate; integument between punctures smooth, well shining. Elytra densely punctate; punctures more conspicuous than on pronotum; humeral calli well developed. Prosternum gently convex below, densely and coarsely punctate; punctures rather close to each other, becoming denser and confluent anteriorly; prosternal process tapering apically, feebly carinate. Hypomera with large antennal cavity occupying whole of it; cavity finely and sparsely punctate, gently and weakly excavate; posterior margin of cavity closed by carina. Metasternum sparsely punctate; punctures becoming denser towards sides. Metaepimeron densely and conspicuously punctate. Abdomen finely and densely punctate. Legs slender and simple; claws simple, without basal appendix.

**Genitalia** (Fig. 5): Bursa with two pairs of elongate sclerites; shorter ones enlarged and swollen at inner end; longer ones simple, gently curving, inconspicuously dentate along inner margin.

**Male.** Closely similar to female. Antennal clubs ovate, extremely large, larger than those of female, occupying all of hypomeron (Fig. 4). Male genitalia (Fig. 6): Median lobe simple; base of median piece bifid; tegmen elongate, gently tapering towards base; tegminal capsule well developed.

**Diagnosis.** This species can be separated from any other species by its shining pronotum, dorsal maculation and two pairs of sclerites in female. These sclerites might be a good diagnostic character as in *Trogoderma orphinus thailandicus* Háva, 2012, which will be transferred to another genus, has also two pairs of sclerites, but differs in its appearance and the genital structure. From the species *O. atrofasciatus* Pic, 1916 the new species differs by its narrow elytral transverse fasciae; elytral transverse fasciae on *O. atrofasciatus* is very broad (Fig. 2).

**Etymology.** Named in honour of Jan Horák (Prague), worldwide known specialist in Mordellidae (Coleoptera).

## References

Háva, J. 2003. *World Catalogue of the Dermestidae (Coleoptera)*. Studie a Zprávy Oblastního Muzea Praha východ v Brandýse nad Labem a Staré Boleslavi Supplementum 1: 1-196.

Háva, J. 2013a. A new species of *Orphinus* Motschulsky, 1858 from China (Coleoptera: Dermestidae). *Entomologische Zeitschrift*, Stuttgart **123**: 25-26.

Háva, J. 2013b. Description of *Orphinus (Falsoorphinus) burmanicus* sp. nov. (Coleoptera: Dermestidae: Megatomini) from Burma. *SOAJ Entomological Studies* **2**: 11-15.

Kitano, T. & Háva, J. 2012. Collecting records of Dermestidae (Coleoptera) from Laos with description of a new species. *Studies and Reports Taxonomical Series* **8**: 213-218.

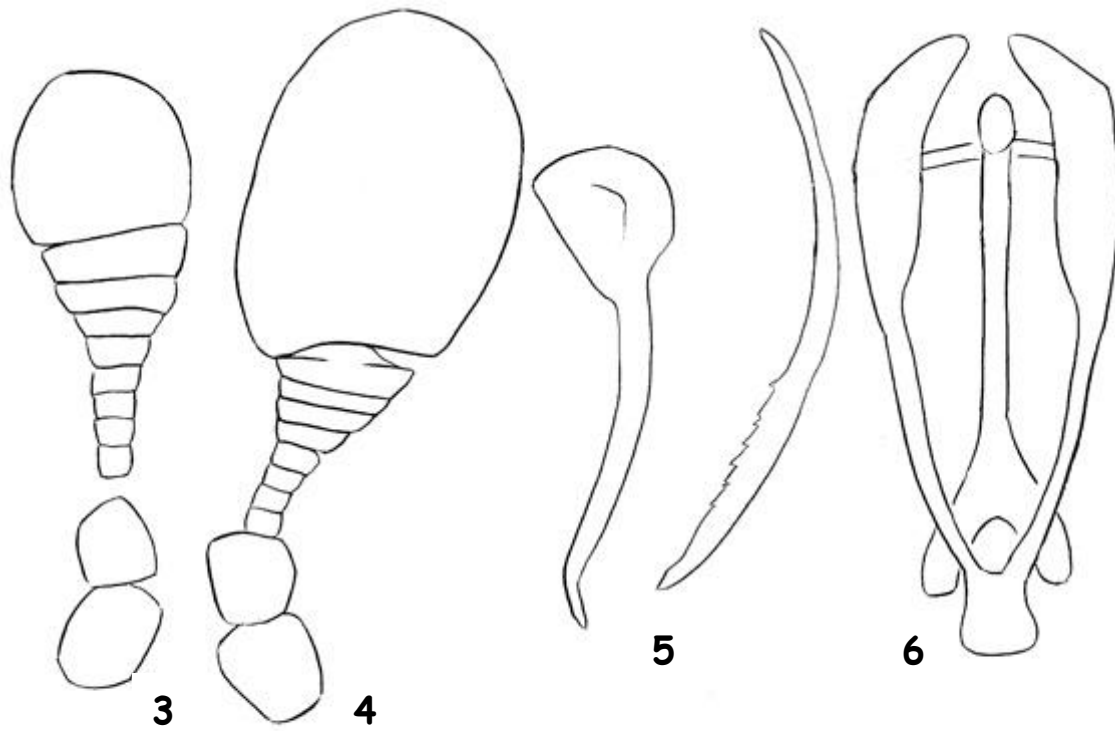
Mroczkowski, M. 1968. Distribution of the Dermestidae (Coleoptera) of the world with a catalogue of all known species. *Annales Zoologici* **26**: 15-191.



Fig. 1. - *Orphinus (Orphinus) horaki* sp. nov., habitus, dorsal view.



Fig. 2. - *O. atrofasciatus* Pic, 1916, holotype, habitus, dorsal view (by J. Háva).



Figs. 3-6.- *Orphinus (Orphinus) horaki* sp. nov.: 3.- antenna of female; 4.- antenna of male; 5.- female sclerites in bursa copulatrix; 6.- aedeagus.